

BASIC SKIN

tempio[®]

CERAMIC FACADE FROM
CERÁMICA MAYOR S.A.

2023

BASIC SKIN

| | |
|--|----|
| BASIC SKIN DEFINITION..... | 2 |
| TYPES OF SYSTEMS | 2 |
| GENERALITIES | 2 |
| TILE FEATURES..... | 3 |
| SYSTEM FEATURES | 4 |
| WHICH SYSTEM IS MORE SUITABLE FOR THE PROJECT? | 7 |
| AVAILABLE SECTIONS (TILES)..... | 7 |
| GENERALITIES | 7 |
| CUSTOMIZED OPTIONS..... | 8 |
| AVAILABLE COLORS | 8 |
| GENERALITIES | 8 |
| STANDARD COLOR PALETTE | 10 |
| CUSTOMIZED OPTIONS..... | 11 |
| PRODUCTION..... | 12 |
| DEFINE A NEW PRODUCTION..... | 12 |
| TIMMING..... | 12 |
| POST PRODUCTION POSSIBILITIES..... | 12 |
| PRICES..... | 14 |
| CERAMIC TILES..... | 14 |
| SUBSTRUCTURE | 14 |
| PACKING | 15 |
| CERAMIC..... | 15 |
| STRUCTURE | 16 |
| CONTAINER LOADING..... | 16 |
| QUICK NOTE ABOUT VERTICAL INSTALLATION | 17 |
| MARKETING TOOLS..... | 18 |
| LIBRARY | 19 |

BASIC SKIN DEFINITION

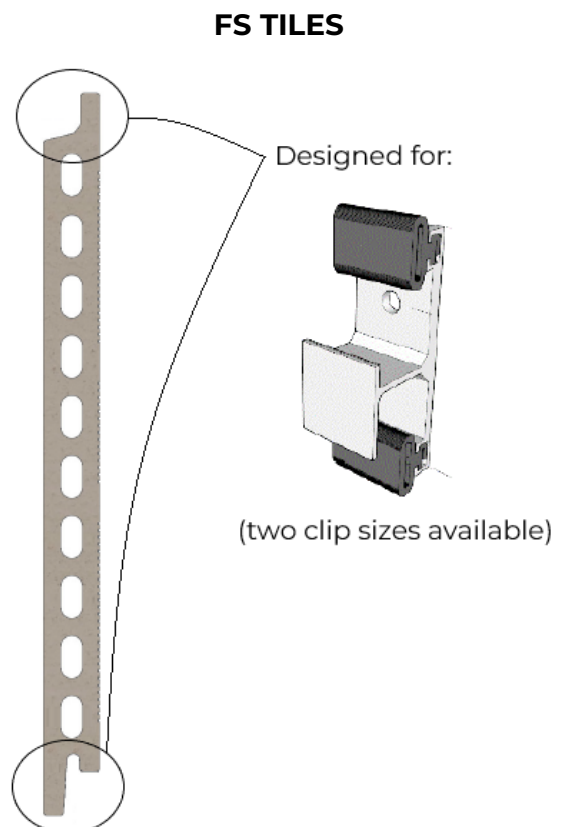
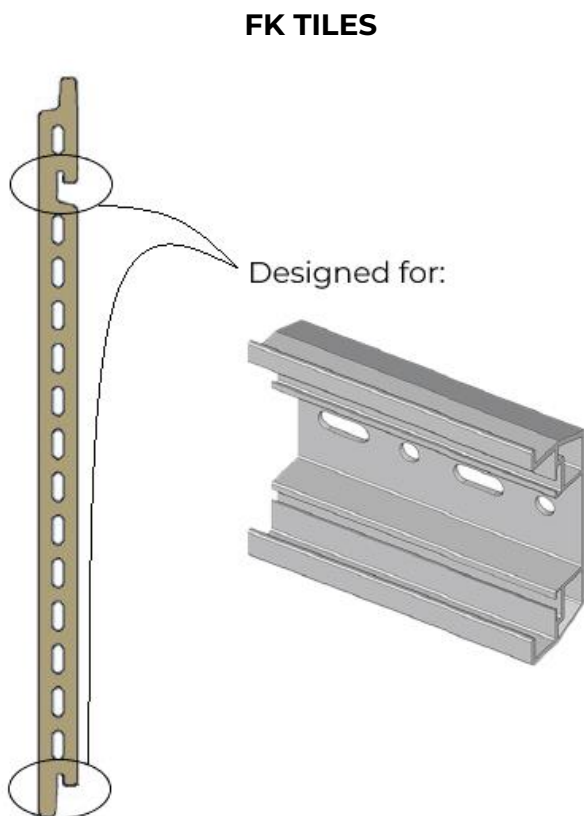
BASIC SKIN embraces our standard ceramic tiles for ventilated façade. It is supposed that:

- All BASIC SKIN ceramic tiles are designed to be installed using our TEMPIO FK or TEMPIO FS system.
- The complete system (tile + aluminum substructure) is covered by an ETA (European Technical Assessment).
- We are suppliers of the complete system: tiles and aluminum structure. The client can buy only the ceramic, but the substructure is an option.
- BASIC SKIN tiles are designed to be placed horizontally (it doesn't mean that you can't use them vertically, but you can't do it using FK/FS certified substructure).

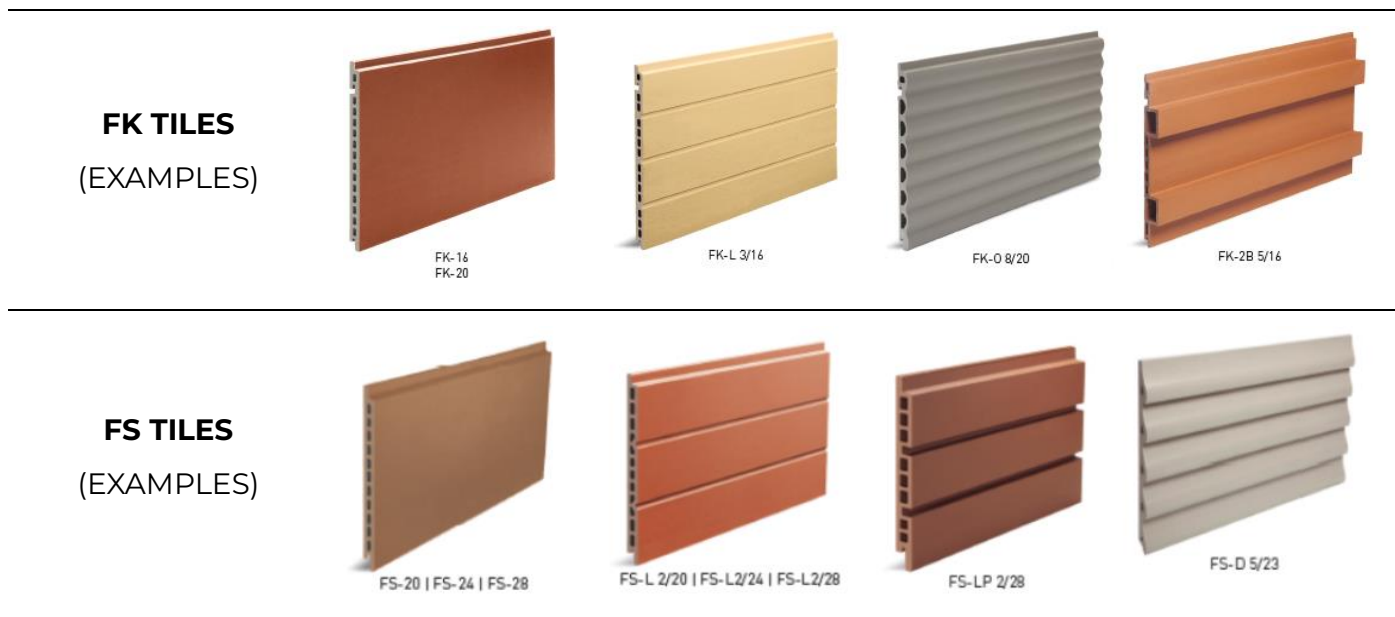
TYPES OF SYSTEMS

GENERALITIES

Our BASIC SKIN ceramic tiles are divided into two types according the anchoring type. Tiles for FK SYSTEM and tiles for FS SYSTEM.



Note that FK TILES and FS TILES could be flat or not. Here some examples:



Check TEMPIO's complete range of FK and FS TILES in our **SYSTEM CATALOGUE**.

TILE FEATURES

We want to highlight some differences between FS and FK TILES that can make one type more suitable for the project:

| | FK TILES | FS TILES |
|-----------------------|---|---|
| Thickness | <p>16mm / 20mm</p> <p>Our aluminum profile is not designed to support thicker tiles.</p> | <p>20mm / 28mm</p> <p>Note that we have two different clips (one bigger than the other).</p> |
| Maximum length | <p>16mm thickness: 1200mm</p> <p>20mm thickness: 1500mm</p> | <p>1500mm in both cases (20 and 28mm thickness).</p> |

Other characteristics of BASIC SKIN tiles are:

- **TYPE OF MATERIAL:** Extruded porcelain ceramic.
- **WEIGHT:** It starts from 28.5kg/sqm (flat tiles 16mm thickness) and can arrive to more than 50kg/sqm.
-

To find out more about BASIC SKIN TILES characteristics (tolerances, resistance, technical characteristics...), we recommend you to ask for our **TECHNICAL DATA SHEET**.

SYSTEM FEATURES

As we have said before, TEMPIO has developed an certified (**ETA certificate**) system for FK and FS TILES.

We recommend to learn about our systems in our **TECHNICAL CATALOGUE (for FK and FS)**.

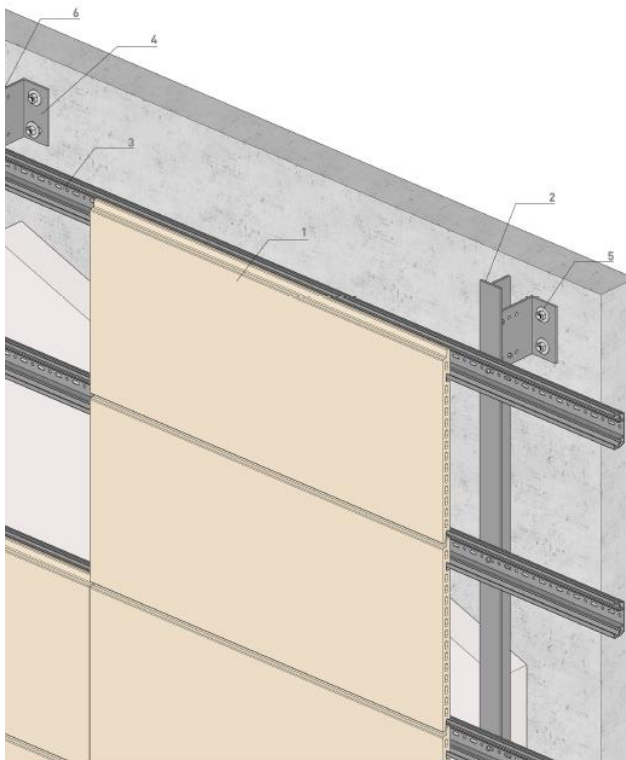
This document is available in PDF and DWG and it DWG includes:

- 3D representations of the system
- Details of all the components.
- Architectural 2D details (construction details)

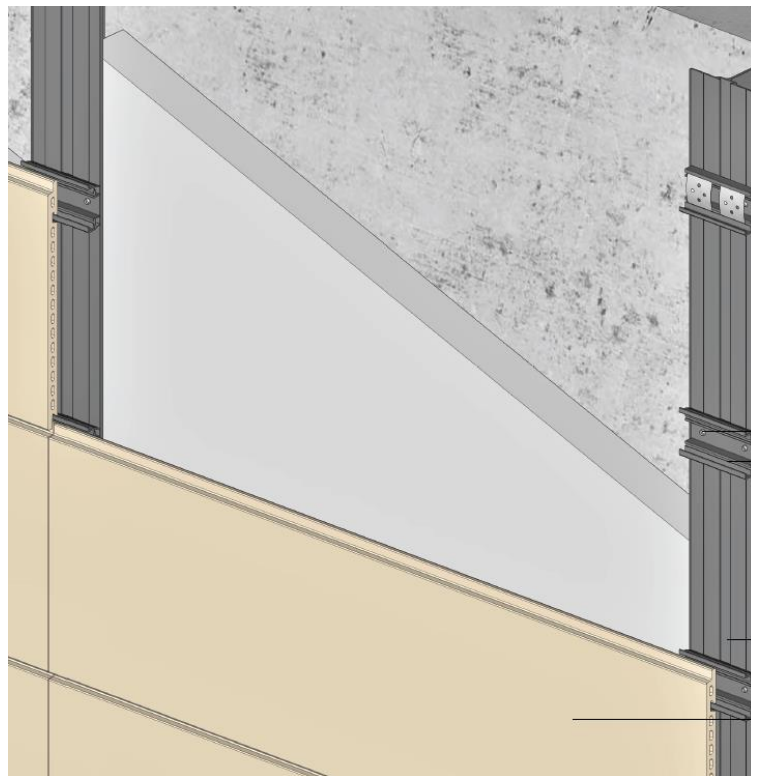
In any case, here with a quick view our systems:

FK SYSTEM

CONTINUOUS INSTALLATION

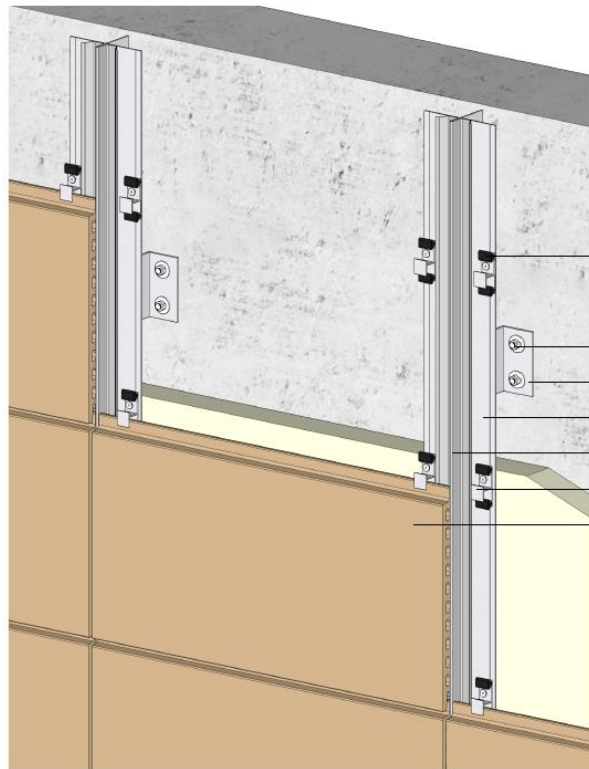


PUNCUTAL INSTALLATION



FS SYSTEM

PUNCUTAL INSTALLATION



Here a table to highlight the strengths of our systems:

FK

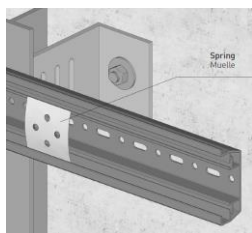
FS

Both systems are designed to avoid the little movements (wind, vibration...) of the tiles.

In this system, the horizontal rail admits an steel spring.

FS clips includes a gasket which is in direct contact with the tile.

Anti- Rattling



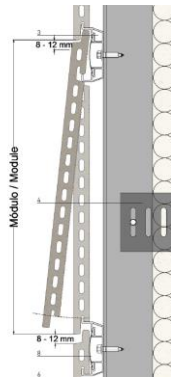
Our FK continuous rail have holes to avoid the water accumulation (and its problems). There's no need of this in punctual systems (FS).

Water retention



Detachable

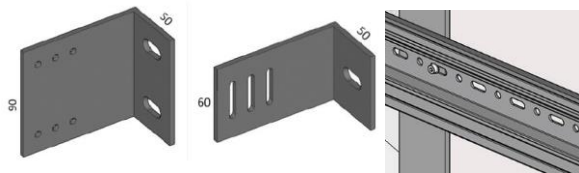
In both systems it is possible to remove a tile without disturbing the other tiles.



Compatibility of internal

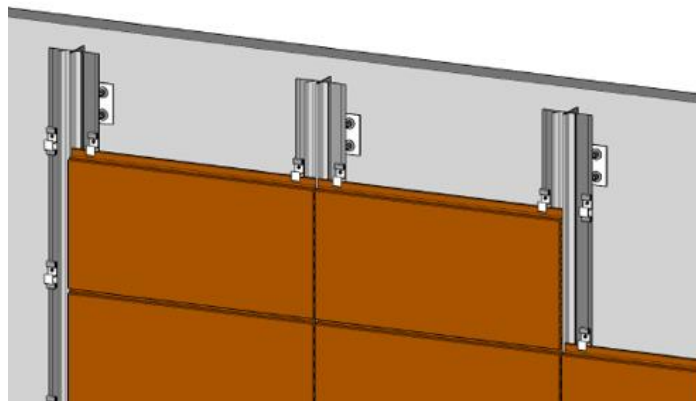
Our systems are designed to permit internal movements (due to thermic dilatation or standard use deformations) between the components. This way the system works correctly, and the substructure elements are not stressed.

This is the reason to create oval/punctual holes to fix the substructure continuous elements.



Sealing

FS system has a vertical joint profile in case that it is needed.



To finalize with this section we want to point out that, although our TECHNICAL CATALOGUE includes the most common construction details (joints, capping, windows...), you can ask our **TECHNICAL DEPARTMENT** to prepare a specific detail/solution if it is needed for the commercial negotiation (for example beginning in a slope street...).

Note that this details will be based on our experience, they won't be certified.

WHICH SYSTEM IS MORE SUITABLE FOR THE PROJECT?

This question has not a correct answer. Normally the answer is based on the following reasons:

- Experience of the installation company
- Project specifications
- Adequacy of the tile (for example, if a thick tile is needed, only possibility is FS system)
- ...

And, of course, **price**. This table try to give an idea of the cheaper system according to the size of the ceramic tile. Note that this is just an idea, each project has its own particularities.

| | | | | | |
|---------------|---------------|------------------|-------------------|-------------------|-------------------|
| Height | 500 mm | FK CONTINUOUS | FK/FS PUNCTUAL | FK/FS PUNCTUAL | FK/FS PUNCTUAL |
| | 400 mm | FK CONTINUOUS | FK/FS PUNCTUAL | FK/FS PUNCTUAL | FK/FS PUNCTUAL |
| | 300 mm | FK CONTINUOUS | FK/FS PUNCTUAL | FK/FS PUNCTUAL | FK/FS PUNCTUAL |
| | | 600mm | 900mm | 1200mm | 1500mm |
| | | Lenght | | | |

AVAILABLE SECTIONS (TILES)

GENERALITIES

Our available sections are defined in our **SYSTEM CATALOGUE**. For example, for FK tiles you can find this table:

Type of tile. The photo of the tile for reference is available in the same catalogue page.

| Height module/inch Alto módulo/mm | FK-16 | FK-20 | FK-L 1/16 | FK-L 1/20 | FK-L 2/16 | FK-L 3/16 | FK-L 4/16 | FK-0 8/20 | FK-L 59/16 | FK-1BA 5/16 | FK-1BB 5/16 | FK-2B 5/16 |
|--------------------------------------|-------|-------|-----------|-----------|-----------|-----------|-----------|-----------|------------|-------------|-------------|------------|
| 200 - 7,87" | ■ | ■ | ■ | | | | | | ■ | | | |
| 240 - 9,44" | ■ | | | | | | | | | | | |
| 250 - 9,84" | ■ | | | | | | | | | | | |
| 280 - 11,02" | ■ | | | | | | | | | | | |
| 300 - 11,81" | ■ | ■ | ■ | ■ | ■ | | ■ | ■ | | ■ | ■ | ■ |
| 310 - 12,20" | ■ | ■ | | | | | | | | | | |
| 315 - 12,40" | ■ | ■ | ■ | | | | | | | | | |
| 340 - 13,38" | ■ | | | | | | | | | | | |
| 350 - 13,78" | ■ | ■ | ■ | | | ■ | | | | | | |
| 380 - 14,96" | ■ | | | | | | | | | | | |
| 400 - 15,74" | ■ | ■ | | ■ | | ■ | | | | | | |
| 450 - 17,71" | ■ | | | | | | | | | | | |
| 500 - 19,68" | ■ | ■ | ■ | | | | | | | | | |
| 510 - 20,07" | ■ | | | | | | | | | | | |
| 545 - 21,45" | ■ | ■ | ■ | | | | | | | | | |
| 600 - 23,62" | ■ | ■ | | | | | | | | | | |

Height of the tile

Yellow square in the intersection means that the section is available for production. For example, this square means that FK flat tile in 20mm thickness is available in 310mm height.

Furthermore, all TEMPIO **sections (tiles) are completely defined in pdf and DWG drawings.**
Ask for these documents if you need them.

CUSTOMIZED OPTIONS

What happens if the section that you're looking for is not available?

We have the possibility to create a new section. We have our own workshop and industrial dies are done in our factory.

Create a new section has a cost and it has be always discussed with the factory.

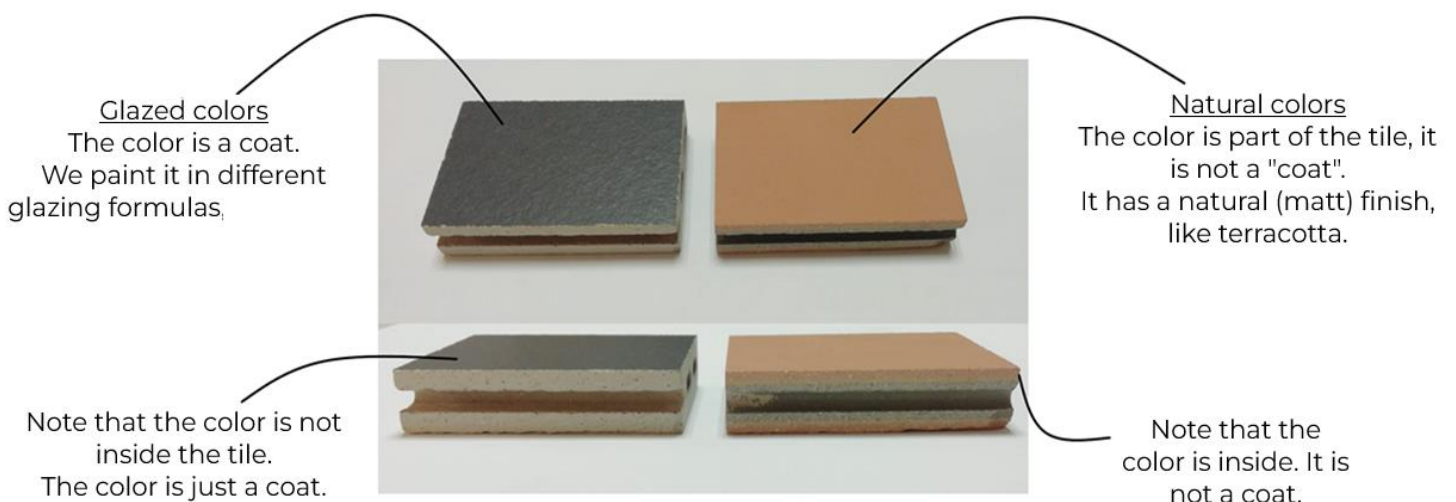
Here the main steps of this process:

1. TEMPIO receives the draw of the required new shape.
2. TEMPIO adapts it to FK/FS anchoring and makes a suitable proposal to the client.
3. The client revise TEMPIO's draw and, if it doesn't need any modification, sign it as a confirmation.
4. TEMPIO invoices the die and begins with the die production.

AVAILABLE COLORS

GENERALITIES

BASIC SKIN has two different lines of colors: **NATURAL COLORS** (body colors) and **GLAZED COLORS**.



We want to emphasize in the different possibilities of our **GLAZED COLORS**:

○ **Flat colors**

We paint our ceramic in different glazing formulas, which will result in **different finishes: matt, glossy or satin.**



Matt
No light reflection



Satin
Uniform light reflection



Glossy
Watter light reflection



○ **Design colors**

We can print tiles, here an example:



To finalize this section, we want to warn your that no all our colors are appropriate for all our tiles. Please, ask factory when you doubt if one section will be ok for one color.

FLAT TILES

VOLUMEN TILES

NATURAL COLORS



FLAT GLAZED COLORS



DESING GLAZED COLORS



STANDARD COLOR PALETTE

Here a summary of our standard range of colors (natural and glazed). You can check them all in our **SYSTEM CATALOGUE**.

NATURAL COLORS



Marrón BR40-50



Blanco W00-15



Amarillo Y15-15



Amarillo Y30-30



Rojo R40-24



Rojo R15-20



Marrón BR40-40



Marrón BR17-10



Naranja NA06-06



Rojo R10-18



Negro B40-20



Negro B40-10



Gris GR25-25



Naranja NA06-15



Negro B40-40



Gris GR13-20



Gris GR05-10

GLAZED COLORS

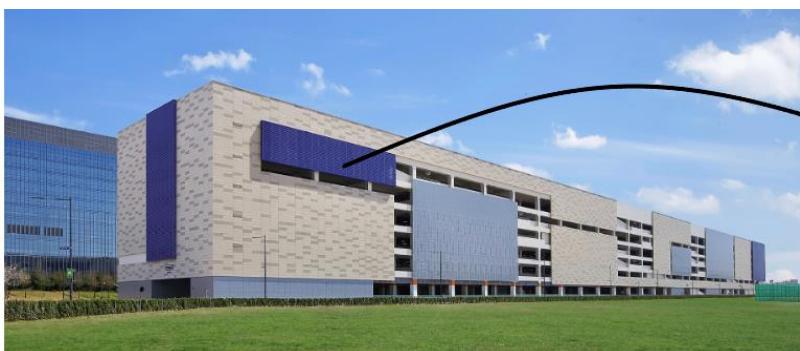


GLAZED DESIGNS COLORS

We recommend to check our **DESIGN LEAFLET** to learn more about these colors.

CUSTOMIZED OPTIONS

We understand that sometimes a specific color is required, copy the corporative color of the client, for example. Here an example of this case:



For example, for this project we have had to develop the exact "Samsung" blue.

Normally customized options are ok for flat colors. Note that, in order to create a new color for a specific project, we need a minimum production quantity and it is possible that the price of the ceramic increase a little (1-2€/sqm).

To prepare a customize flat glazed color, we need (at least) the following information:

- Reference (real sample, RAL code, NCS code...)
- Required finish (satin, matt or glossy)
- Support (which is the final tile that will be glazed? Is it flat?)
- ...

For GLAZED DESING and NATURAL COLORS customize options should be studied carefully for each possible case.

PRODUCTION

DEFINE A NEW PRODUCTION

BASIC SKIN is not a stock product. The production is done specifically for each building project. Then, we can adapt our production for the project needs.

Some issues must be considered:

- There are **minimum production quantities**.
We feel comfortable and the performance of the production line is correct with productions about 1000sqm per **tile section/color**. We can consider smaller productions adding a set up cost or as a part of a bigger project, but the viability of small productions should be revised by the factory.
- **If there's an exceed of quantity during production**, it won't be invoiced to the final client. Tempio will keep the excess.

TIMMING

Standard timing for production is about 8 weeks from formal confirmation of the order.

POST PRODUCTION POSSIBILITIES

We understand that, once the main product is produce, it will need some “standard adaptation” to the final order. Here the most standard processes that we use:

MITTRECUT

Mittrecut is available to solve corners.
We quote it per linear meter.

LONGITUDINAL CUT

Normally all the façade can't be solved with only one height, but minimum quantity requirements prevent us to produce different moduls. Here is where longitudinal cut is needed.
Here one example (FK tile from 400mm to 320mm):

(front view)

We quote it per linear meter.

DIFFERENT LENGTHS

Normally we accept 2 different lengths per 1.000sqm of façade. If more lengths are needed, we will quote the cutting cost.

There are other possibilities (like holes, paint sides or special cuts) that can be done on tiles. All of these should be revised in each case.

PRICES

CERAMIC TILES

Each production is different, then, we can't set a price per sqm and we need to study/quote each production independently. In any case, we understand that a range of prices is needed for working.

We can give you an idea (check our **PRICES FOR CERAMIC TILES**) but, always, the final price for each project/production should be confirmed by the factory.

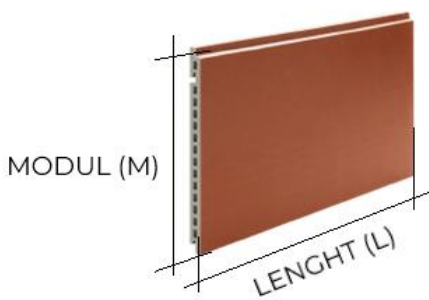
SUBSTRUCTURE

Our unit **price-list for FK and FS substructure items** is available. This price-list is updated according to raw-material prices. It will help during the first phase of quotations, but, please, ask for updated prices when you need a formal offer.

We are not quoting the substructure for sqm of façade. Window holes, for example, makes difficult to set correctly a price per sqm which works for all the projects. TEMPIO will always invoice by unit prices.

In any case, it is possible to have an approx. price per sqm (considering a flat wall without windows) following these ratios:

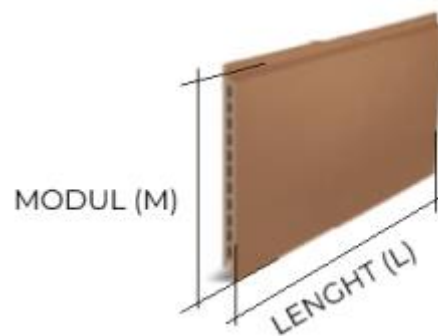
CONTINUOUS FK SYSTEM



D: DISTANCE BETWEEN VERTICALS

| | | |
|---------------------|----------------|--------|
| Vertical profile: | 1/D | m/sqm |
| Horizontal profile: | 1/M | m/sqm |
| Brackets (sus): | (1/D)/3 | Ud/sqm |
| Brackets (ret): | 1/D | Ud/sqm |
| Springs: | 1/(MXL) | Ud/sqm |

FS SYSTEM



| | | |
|-------------------|----------------|--------|
| Vertical profile: | 1/L | m/sqm |
| Brackets (sus): | (1/L)/3 | Ud/sqm |
| Brackets (ret): | 1/L | Ud/sqm |
| Clpss: | 2/(MXL) | Ud/sqm |

PACKING

CERAMIC

Type of packing

We use this kind of packing for flat façade tiles.



Notes about this packing:

- We don't use cartoon boxes.
- Pallets have 1, 2 or 3 floors of tiles. It depends on the weight and size of the tiles.
- Tiles are tied together in packages using straps. Each package is between 6-10 tiles (it depends on the weight of the tile). In the photos we have used black straps to make the packages.
- We use 4 wood corner post to protect the tiles.
- The general pallet is finished with straps, plastic and cartoon.
- All the wood used in this packing is treated and marked in compliance with ISPM 15.
- Each pallet is about 1000-1400kg.
- Stackable pallet.
- Each pallet is labelled on the top face, using this kind of label.

| | | | |
|-----------------------|--|--|--|
| tempio ® | | CERAMICA MAYOR S.A. | |
| FACHADAS VENTILADAS | | Pda. Planet s/n | |
| | | 03510 Callosa d'en Sarriá -Alicante- ESPAÑA | |
| | | Telf. (34) 965 881 175 Fax. (34) 965 881 919 | |
| | | www.tempio.es | |
| Cliente: | | | |
| Cient: | | | |
| Obra: | | | |
| Projekt: | | | |
| Referencia de Pedido: | | Pais: | |
| Ref. Projekt: | | Country: | |
| Tipo Fachada: | | Palet N°: | |
| Type Fachada: | | | |
| Medidas Nominales: | | | |
| Nominal Sizes: | | | |
| Color: | | | |
| Colour: | | | |
| Pzas./Palet: | | Corte: | |
| Pieces./Palet: | | Cut: | |

Formal definition (Packing list)

We define the packing for each project and you will have it in advance to be able to organize loadings. The packing is a list which defines the number of pallets and its contents. Here an example:

| | | Medidas Corte | | Tipo Fachada | FK16/150 | | | País |
|----------|----|---------------|-----|---------------------|-----------------|--------------|------------------|---------|
| | | Cut Sizes | | Type Fachada | | | | Country |
| | | 150 X | 450 | Fecha inicio pedido | | | Fecha fin pedido | |
| | | Med. Nominal | | Color | Corte | Pzas. Palet | m2 | Kgr. |
| | | Nominal Sizes | | Colour | Cut | Pieces Palet | aprox. | Aprox |
| PALET Nº | 14 | 150 X | 450 | EM2155 GREY ARCADIA | Normal | 360 Pzas. | 24,30 | 651,24 |
| PALET Nº | 15 | 150 X | 450 | EM2155 GREY ARCADIA | Normal | 360 Pzas. | 24,30 | 651,24 |
| PALET Nº | 16 | 150 X | 450 | EM2155 GREY ARCADIA | Normal | 360 Pzas. | 24,30 | 651,24 |
| PALET Nº | 17 | 150 X | 450 | EM2155 GREY ARCADIA | Normal | 360 Pzas. | 24,30 | 651,24 |
| PALET Nº | 18 | 150 X | 450 | EM2155 GREY ARCADIA | Normal | 360 Pzas. | 24,30 | 651,24 |
| PALET Nº | 19 | 150 X | 450 | EM2155 GREY ARCADIA | Normal | 360 Pzas. | 24,30 | 651,24 |
| PALET Nº | 20 | 150 X | 450 | EM2155 GREY ARCADIA | Normal | 360 Pzas. | 24,30 | 651,24 |
| PALET Nº | 21 | 150 X | 450 | EM2155 GREY ARCADIA | Normal | 360 Pzas. | 24,30 | 651,24 |
| PALET Nº | 22 | 150 X | 450 | EM2155 GREY ARCADIA | Normal | 600 Pzas. | 40,50 | 1085,40 |

If the packing is needed in advance (for example, to check transport cost) we have defined a standard packing for flat tiles (**PACKING LIST FOR TEMPIO TILES**).

We don't have a standard packing for volume tiles. For volume tiles you can ask for an approx. packing together with the quotation.

STRUCTURE

Clips, brackets and springs are packing in pallets 110cm x 75cm.

Profiles are packed in bunches which are normally placed on top on ceramic pallets:

Ask for our **PACKING LIST FOR STRUCTURE ITEMS**.

CONTAINER LOADING

All TEMPIO containers are loaded in our factory. We use retention and security items like airbags to ensure a correct transport of our products.

Here an example:

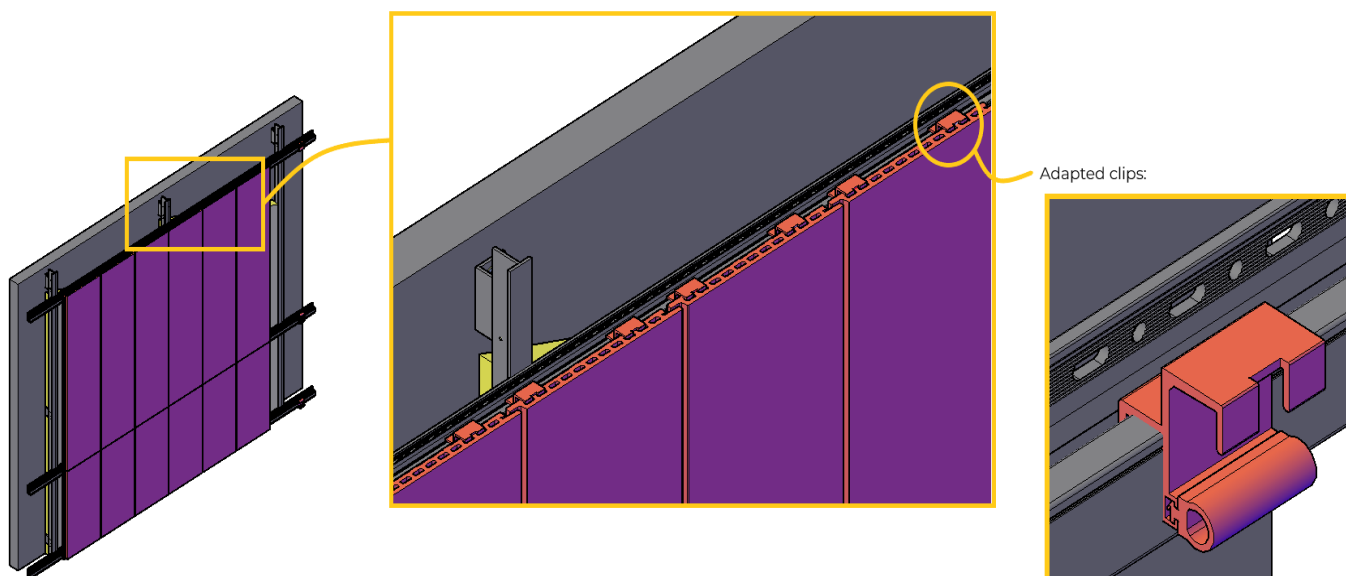


QUICK NOTE ABOUT VERTICAL INSTALLATION

BASIC SKIN doesn't include vertical installation but we understand that this concept is a must.

We want to let you know that 20mm thickness tiles can be installed in vertical by the extrusion holes. TEMPIO has designed a VERTICAL SYSTEM (this system is not covered by any ETA).

If you're interested in this substructure adapted BASIC SKIN tiles, please check our **VERTICAL INSTALLATION TECHNICAL CATALOGUE**.







MARKETING TOOLS

Online tools:

We recommend to use online tools as much as possible. This way we will ensure that they are always updates.

Physical tools:

Please, check all our marketing items in our **MARKETING LEAFLET**. In any case, here our standard tools:

| Item | Photo | Notes |
|--|--|---|
| Catalogues and project books. |  | Hard copy of our catalogues and project books. |
| ET033 Standard color palette. |  | This folder contains our standard color range and samples are not glued (you can quit them) It is a basic item for TEMPIO sales. |
| ET041 Tempio folder |  | This is an empty ceramic folder. We recommend it for different applications, for example to fill it with samples of the same color with the three different finishes. (matt, glazed and satin) or to put together the samples for the same project. |
| ET036 Design colors |  | Bigger samples of our design colors. |

ET006
Hand panels



Hand panel of our systems.

LIBRARY

Here a summary of the available commercial documents for this BASIC SKIN:

- Systems catalogue
- Technical Data Sheet (FK tiles and FS tiles)
- E.T.A. (European Technical Assessment)
- FK technical catalogue (available in PDF and DWG – 2D and 3D)
- FS technical catalogue (available in PDF and DWG – 2D and 3D)
- Draw of the available sections (PDF and DWG)
- Design leaflet
- General idea of prices for ceramic tiles
- Pricelist for FK and FS substructure items
- Vertical installation technical catalogue.
- Packing list for TEMPIO flat tiles
- Packing list for STRUCTURE items.
- Marketing leaflet

Other documents available:

- User's manual (maintenance)
- Declaration of performance
- ISO 9001
- EPD (Environmental product declaration)
- Project book (volume 1, 2 and 3)
- Fire adequacy documents
- Test results
-